



RD28

TECHNICAL SPECIFICATION

Drillcom RD 28 was designed with separate flushing capability.

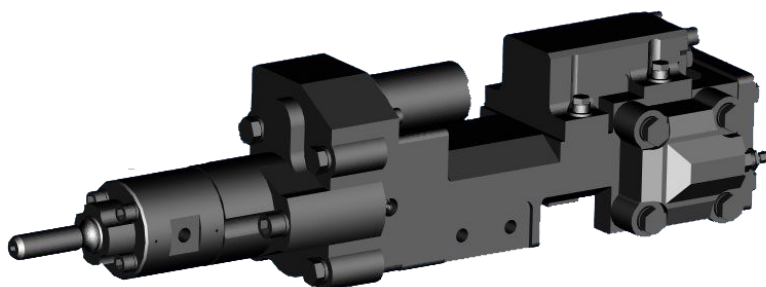
Mainly designed with underground for example bolting & rock consolidation

Maximum recommended hole size of 45mm.

Biodegradable oil usage is recommended to lower environmental impact

MAIN DIMENSIONS

Hole Diameter	32–45mm (51mm)
Power class	5,5 kW
Percussion rate	70 Hz
Percussion kinetic energy	70 Nm
Percussion oil flow	LP Mode 48L/min - HP Mode 38L/min
Rotation motor type	12.5, 20 & 32cm ³
Rotation torque	70 - 270Nm
Weight	75 kg





MOTOR 12,5

Rotation speed (cont.)	400 rpm
Rotation pressure max	130 bar
Rotation torque	70 Nm

MOTOR 20

Rotation speed (cont.)	300 rpm
Rotation pressure max	120 bar
Rotation torque	100 Nm

MOTOR 32

Rotation speed (cont.)	200 rpm
Rotation pressure max	130 bar
Rotation torque	170 Nm

OIL

	Diesel engine oil API CD or higher, SAE 10W30 / 15W40
Hydraulic oil	
Shank lubrication	Shell Torcula 32(W) - 100

ACCUMULATORS

Accumulator. Gas	Nitrogen N2
High pressure (HP)	55bar
Low pressure (LP)	4bar

PERCUSSION

Max power	15,5kW
Kinetic energy	70Nm
Oil flow (max. 160bar)	20 l/min
Feeding force, horizontal	

FLUSHING

Flushing air pressure	6bar
Flushing air flow	1500 l/min
Flushing water pressure	6bar
Flushing water flow	25 l/min

SHANK

Shank lubrication air flow	300 l/min
----------------------------	-----------

