



RD20

TECHNICAL SPECIFICATION

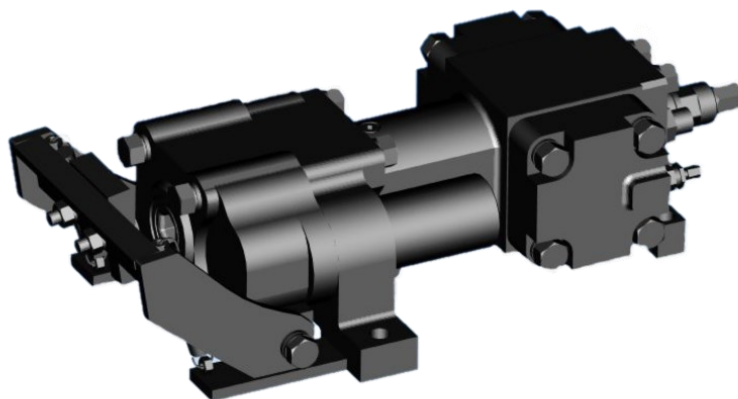
Drillcom RD 20 was designed for blasting and dimensional stone quarrying, requiring very low hydraulic oil flow.

We offer 3 different types of rotation motor assembly configurations (top, left & right handed)

Biodegradable oil usage is recommended to lower environmental impact.

MAIN DIMENSIONS

Hole Diameter	29 –45mm
Impact power class	4 kW
Percussion rate	70 Hz
Percussion kinetic energy	50 Nm
Percussion oil flow (150bar)	33 L/min
Rotation motor type	12.5, 20 & 32 cm ³
Rotation torque	Max 50 - 140Nm (differs between rotation motors)
Weight	53 kg





MOTOR 12.5

Rotation speed (cont.)	500rpm
Rotation pressure max	130bar
Rotation torque	50Nm

MOTOR 20

Rotation speed (cont.)	350rpm
Rotation pressure max	130bar
Rotation torque	100 Nm

MOTOR 32

Rotation speed (cont.)	250rpm
Rotation pressure max	130bar
Rotation torque	140Nm

OIL

Hydraulic oil	Diesel engine oil API CD or higher, SAE 10W30 / 15W40
Shank lubrication	Shell Torcula 32(W) - 100 (S)

ACCUMULATORS

Accumulator. Gas	Nitrogen N2
High pressure (HP)	55bar
Low pressure (LP)	4bar

PERCUSSION

Max power	4kW
Kinetic energy	50Nm
Oil flow (max. 150bar)	33 L/min
Feeding force, horizontal	3.5 kN (theoretical)

FLUSHING

Flushing air pressure	6bar
Flushing air flow	800 l/min
Flushing water pressure	6bar
Flushing water flow	15 L/min

SHANK

Shank lubrication air flow	200 - 300 l/min
----------------------------	-----------------

